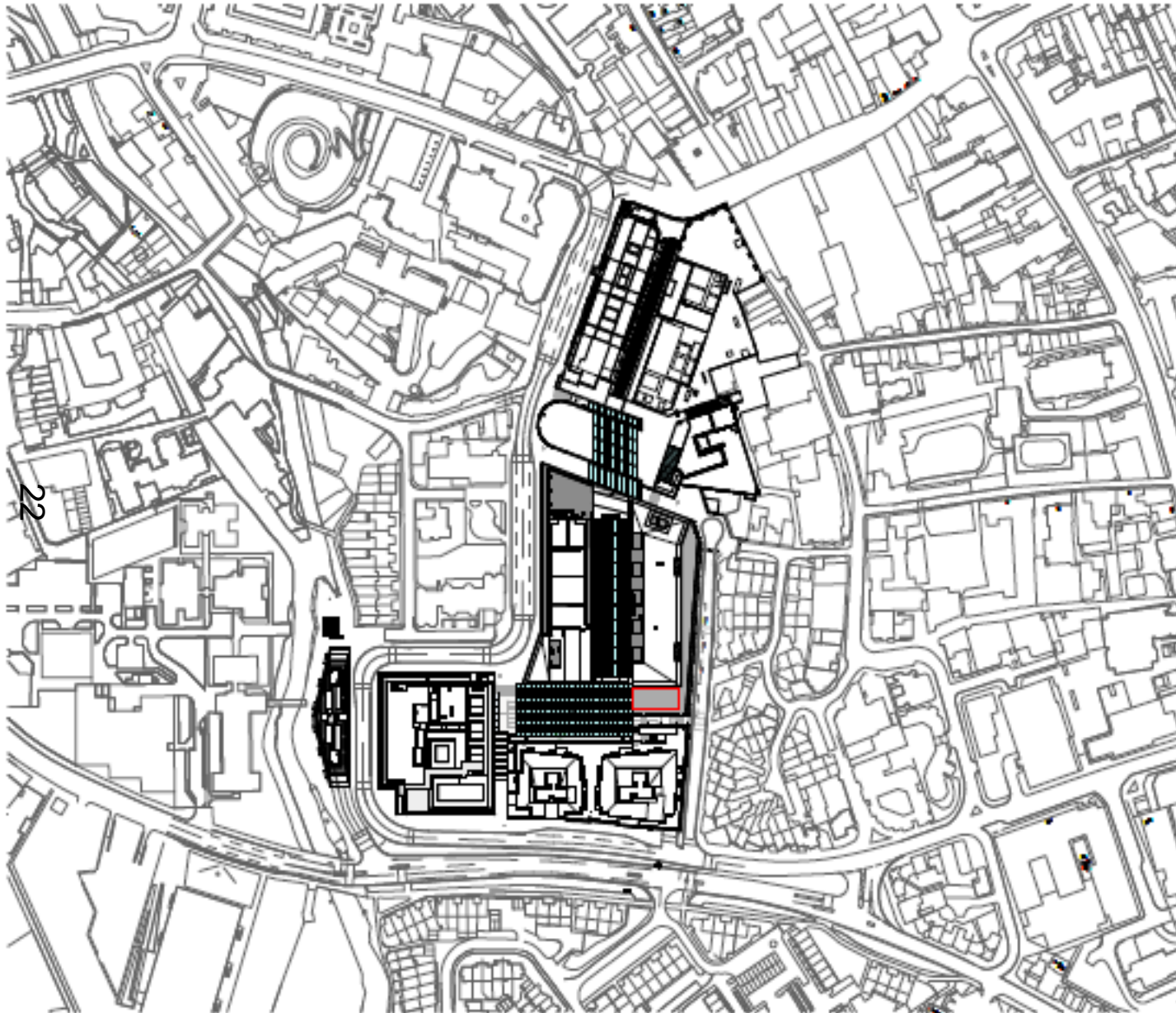


Welcome to the West Area Planning Committee

- This planning committee meeting is held in public but it is not a public meeting.
- There will be an opportunity for the public to address the committee on each application.
- 21 • If you wish to speak for or against a planning application, you need to have either requested it in advance, or hand in one of the available speaker forms, or speak to the clerk.
- Information on meeting protocol and conduct at the committee is set out in the Code of Practice.
- This is in the committee agenda just before the first planning application report.

Site Location Plan



22

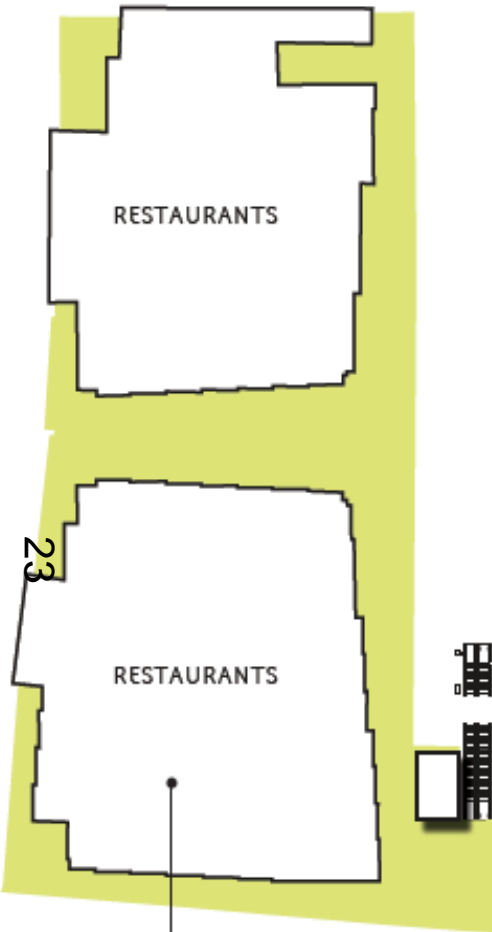
LDA Kitchen Quad Pavilion Site Location Plan

1:1250

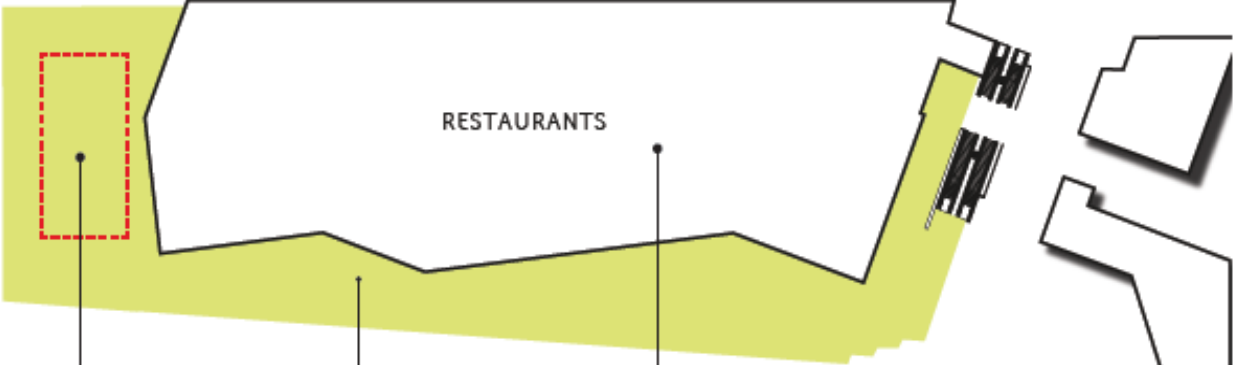
www.oxford.gov.uk



Location Plan



BUILDING 2



KITCHEN QUAD & PAVILION

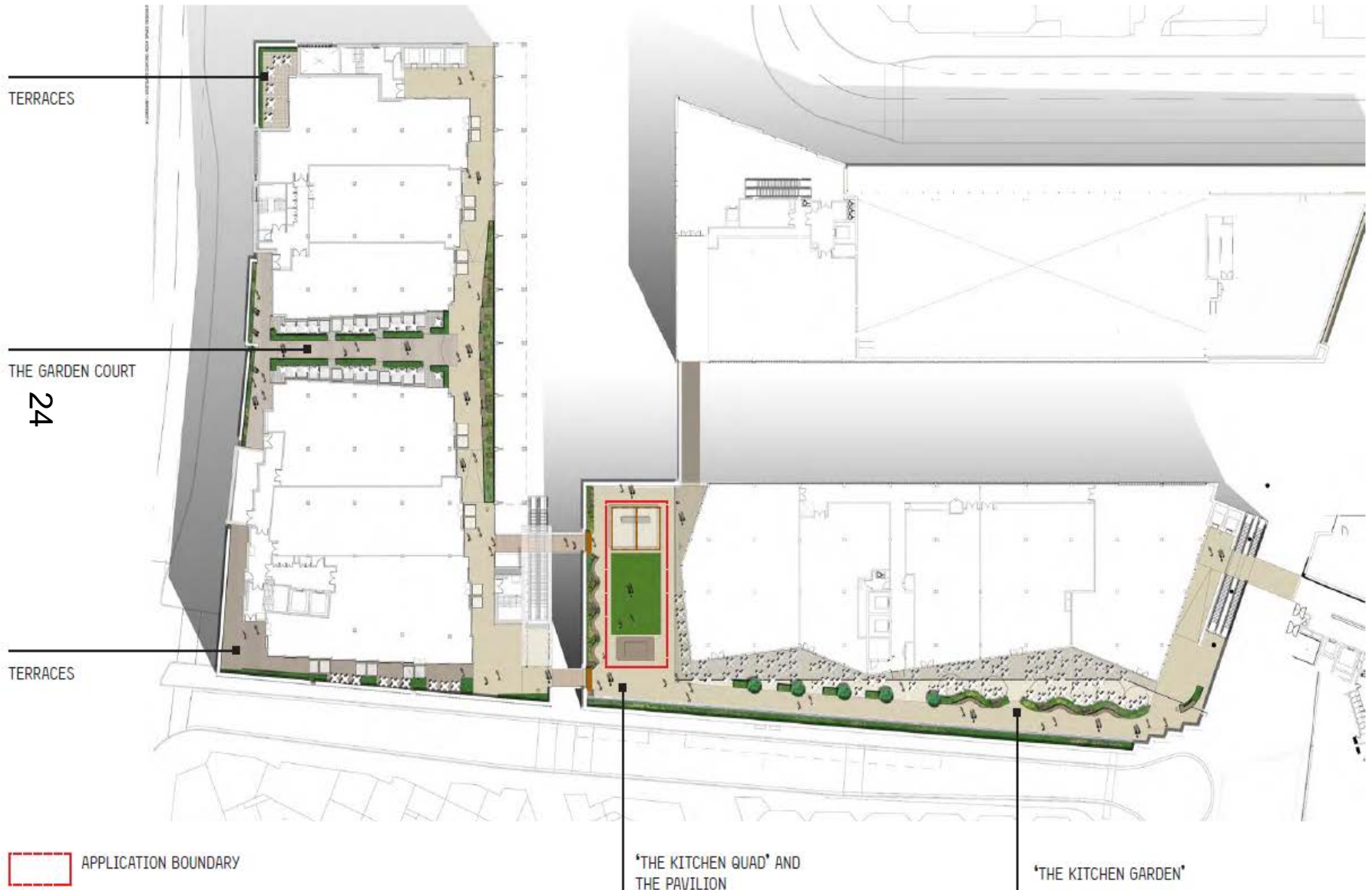
ROOFTOP GARDENS

BUILDING 3

APPLICATION BOUNDARY
ROOF GARDEN EXTENTS

LANDSCAPE MASTERPLAN

Rooftop Layout

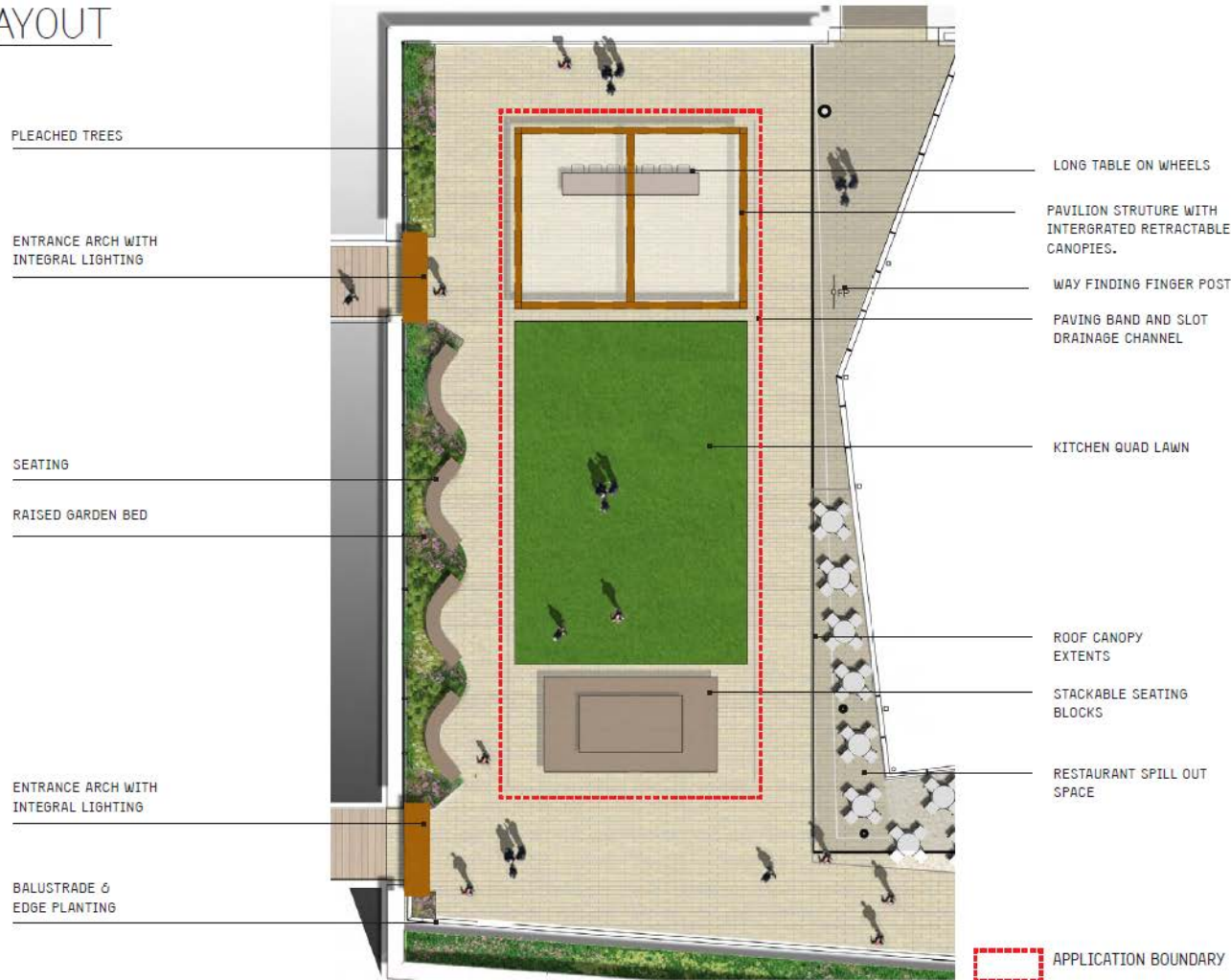


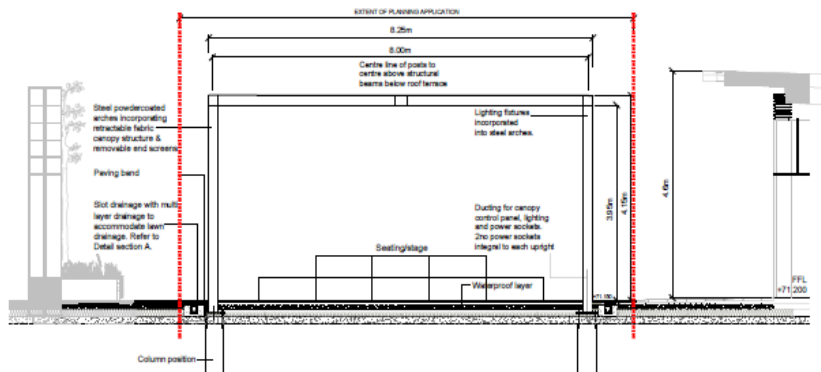
Proposed Layout



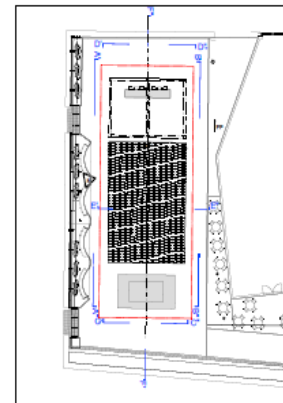
4.1 LAYOUT

25

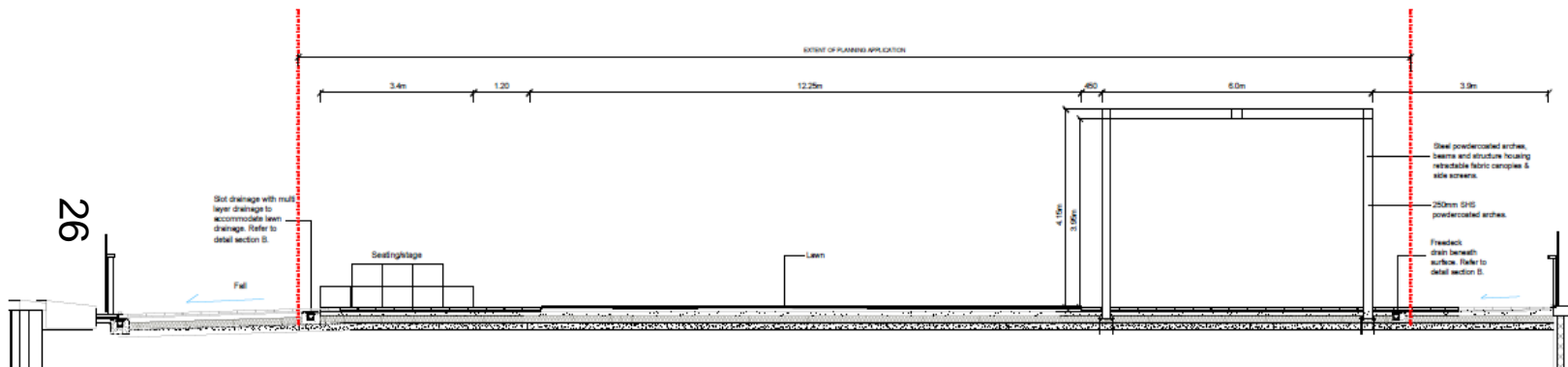




SECTION E

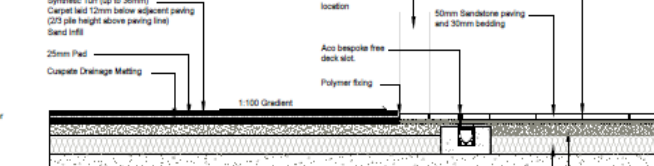
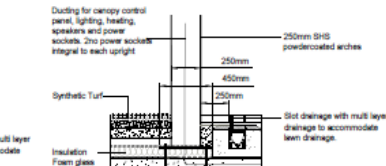


LOCATION PLAN

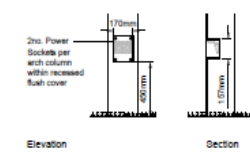


SECTION F

Scale 1:50



L SECTION B



COLUMN DETAIL

Scale 1:20

A Planning Issue 27.05.16
 REV: DESCRIPTIONS APR. 2016

LDADDESIGN

PROJECT TITLE
 WESTGATE OXFORD
 BUILDING THREE
 ROOFTOP GARDENS

DRAWING TITLE
 Sections: Kitchen Quad Block 3

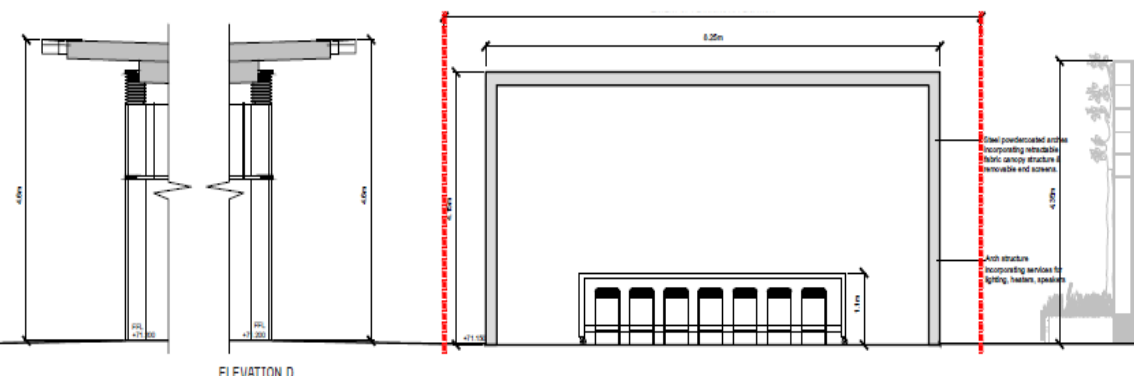
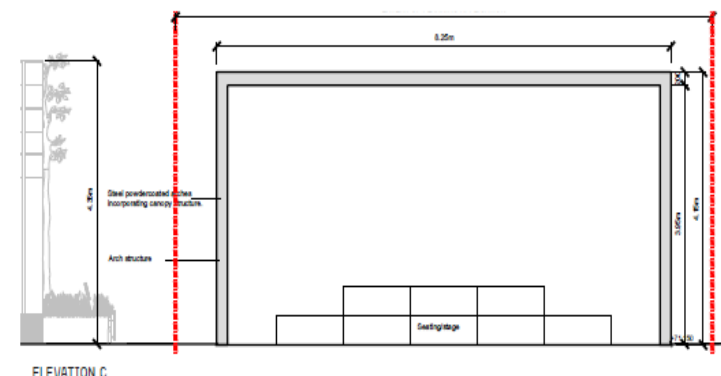
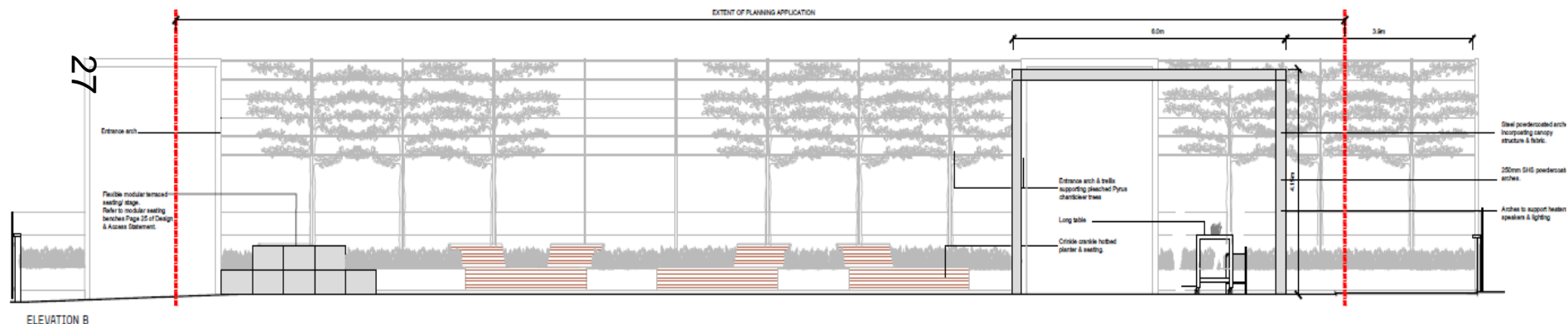
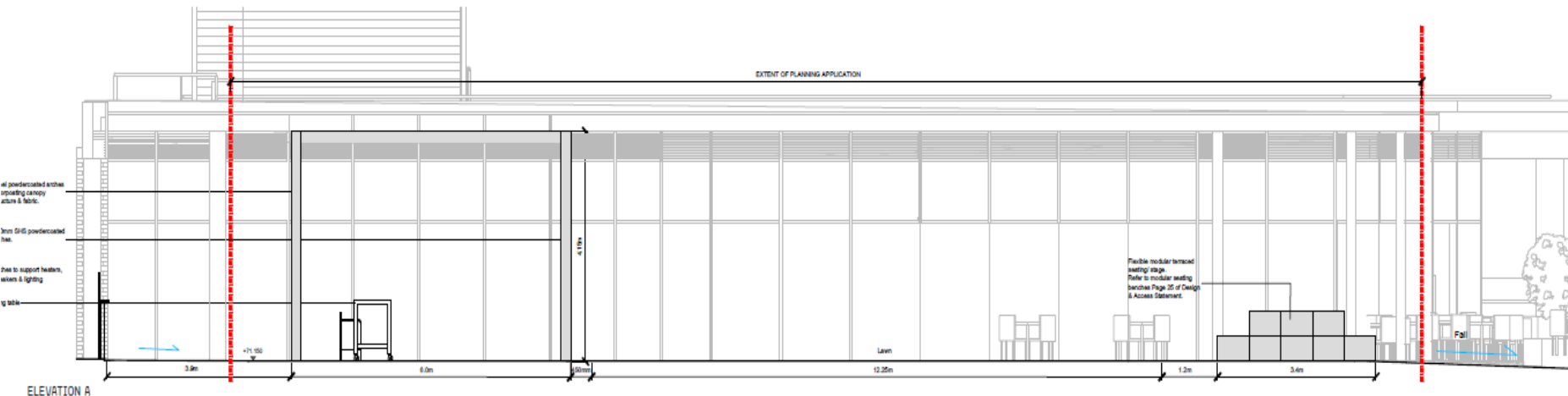
ISSUED BY: Oxford T: 01865 967 000
 DATE: May 2016 DRAWN: SJ
 SCALE: 1:50 CHECKED: DW
 STATUS: Planning APPROVED: SA

DWG. NO 486_P_702

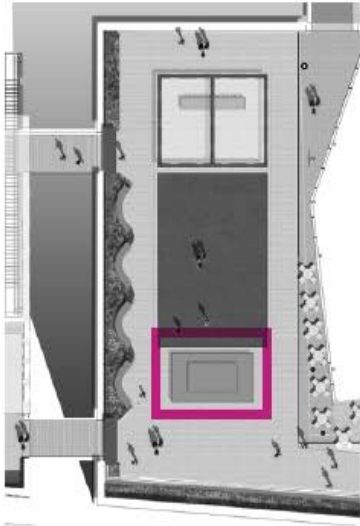
No dimensions are to be applied from this drawing
 All dimensions are to be indicated in mm
 Area measurements for inclusion in programme only
 © LDAD Design Consulting Ltd. Quality Standard in accordance with BS 1191: 2007
 Name: [Redacted] Party:

Proposed Elevations

Proposed Elevations



Proposed Seating



TRANSFORMABLE

1. Terraced seating



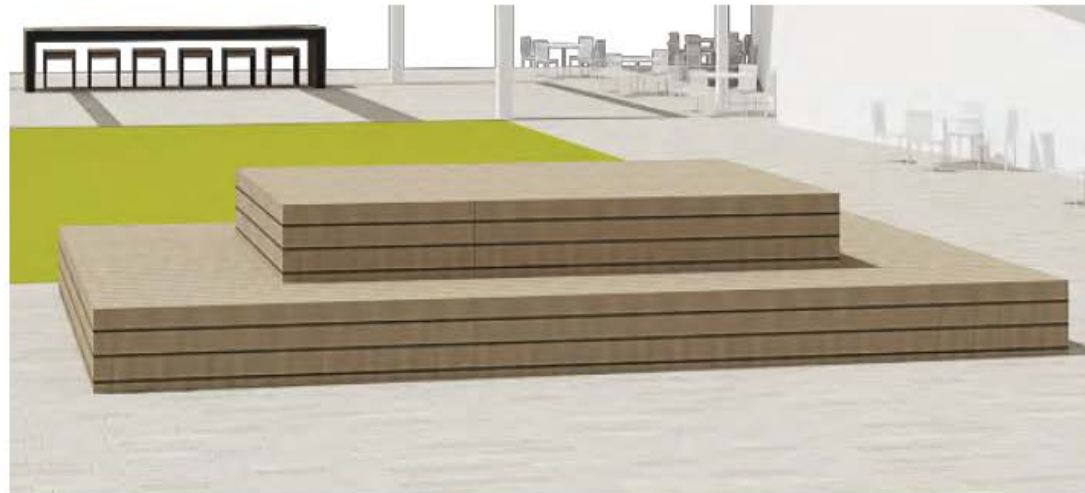
2. Platform/stage



3. Seated rows



- 28
- Seating blocks that reconfigure into a stage
 - Prospect seating with elevated views



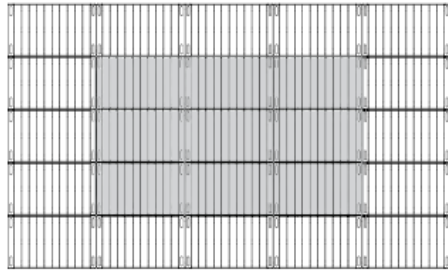
TERRACED SEATING 3D RENDER

Proposed Seating

RAISED STAGE CONFIGURATION

34 common modules each 1220mm x 680mm
10mm separation between modules

6140



29

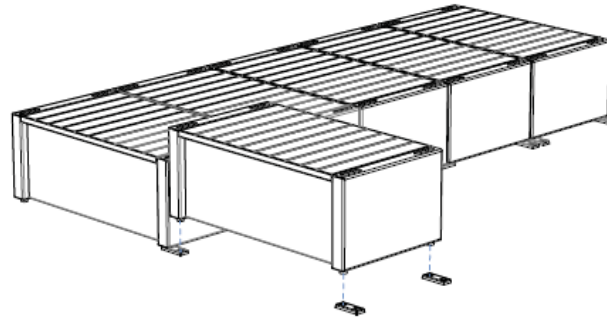


3440

900

BASE LAYER

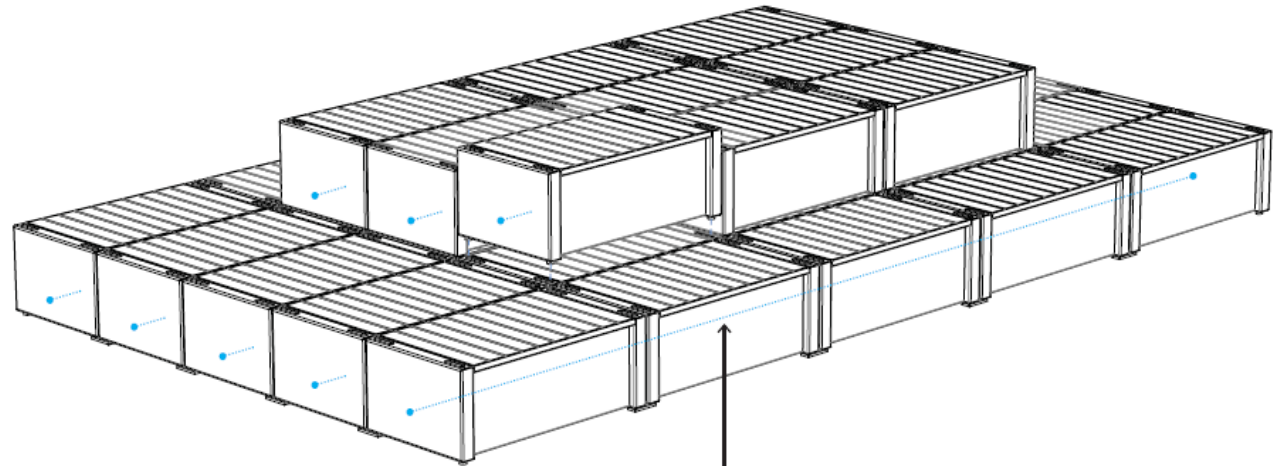
Feet on each corner of each bench module to pass through a joiner plate so that all modules are joined to form a solid combined platform



SECOND TIER

With the base layer joined to form a single structure the feet on the end panels of the second tier modules can be simply located into the cut-outs in the end panels of the bench beneath.

Note, with this system we would not recommend a third tier of seating as the second tier does not provide as solid a form to fix to as the base layer does.



TIE ROD CONNECTIONS

When benches used in multiples of 2 or more in same line, internal tie rod connections joint the benches together for additional security / stability.

OTHER CONFIGURATIONS

The width to height proportions of the modules makes them adequately stable to use without having to fix to the ground. When arranged in rows / groups however, the joiner plates can be used to combine the modules and the addition of the tie rod connections improves the stability further.

This page is intentionally left blank